



# HT3100A

## Liquid GC autosampler

Offering reliability, superior performance and straight forward automation for all GC applications



Analyzing fewer samples? Get precision and performance with a system that is perfectly sized for your needs. **HT3100A offers automation for processing up to 15 samples unattended.**

### KEY FEATURES:

- 50+ GC models supported
- 1 turret serves 2 injectors
- Extraordinary performance
- Requires low maintenance

**It can be easily installed on all the GC and GC/MS systems** available on the market through its flexibility and modular configuration. It can be configured **servicing up to two injectors** in the most of the supported GC.

The self-aligning "plug and play" **HT3100A** mounts in seconds without tools.

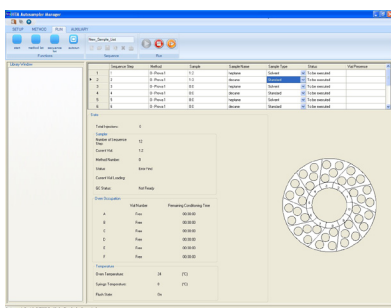
It can be **easily moved between GCs**, also of different brands, when workload changes.

**Easy-to-use controls for zero operator training.** A simple, easy to use keypad lets you start your analysis just pushing START button. All the samples in your rack will be automatically processed.

Quick set of autosampler parameters can be done by the free PC control (**HTA Autosampler Manager**) provided along with **HT3100A**, while all the routine operations can be managed by its dedicated keypad (analysis start, sample loading and extra wash).

**HTA - Sampling for science**

[www.hta-it.com](http://www.hta-it.com)



**You don't need two turrets to automate the two injectors of your GC.** HTA3100A can use both the front and rear injector. The injector selection is made directly by the sequence list, avoiding difficult set up operations or re-installation to pass from one injector to another one.

Furthermore **rotating head design** assures that the injection port is always free, for inlet easy maintenance. The system is fully self-contained and can be interfaced to almost any gas chromatograph, regardless of the GC brand or model you have in your laboratory.

**HTA3100A is the fastest liquid autosampler** available on the market: injection is performed in less than 100ms. Fast-injection technology ensures the best possible peak shape, while maximizing the accuracy of your results.

**HTA3100A features the greatest solvent capacity and the widest solvent selection:** it supports the use of 6 solvent vials of 10ml each (total capacity: 60ml).

Furthermore you can take advantage from the **double wash step capability:** as pre- and post-wash solvent in addition to A, B... F solvents you can also choose for a combination of A+B, A+C... F+E solvents for superior analytical performance (carry-over adverse!).

**HTA3100A handles the most sophisticated sampling techniques:** internal standard technique (also known as sandwich injection), multi-phase, ambient headspace, priority injection, nanoliter injection and much more.

Parameters are easily programmable to optimize both the most convenient sampling method for extremely volatile or viscous samples and the best injection technique. **Variable needle depths** allow you to sample anywhere within the vial, thus performing an extraction directly from the vial.

**HTA3100A** can help you process samples more quickly and get better data, too. It can mount **different types of syringes** with volume from 0.5 to 100µl.



## HTA3100A Technical specifications

### General features

Syringe volume: 0.5, 1, 5, 10, 25, 50 and 100µl  
 Tray capacity: 15 vials, 2ml  
 Maintenance: preventive counters available  
 Electrical control: LAN and TTL; optional: RS232  
 Syringe area illumination: no

### Filling

Sample volume: as low as step of 0.1µl  
 Air volume: as low as step of 0.1µl  
 Filling speed: 1-100µl/sec  
 Viscosity delay: 0-15s  
 Bubble elimination: up to 15 pull up strokes

### Injection

Injection speed: 1-100µl/sec  
 Injection depth: programmable  
 Pre and post inj delay: 0-99s

### Washing

Type: pre-injection, sample, post-injection  
 Solvent capacity: 6x10ml vials  
 Mode: single or double wash

### Internal standard technique

IS volume: as low as step of 0.1µl  
 Air gap volume: as low as step of 0.1µl  
 Mode: 1 or 2 air gaps

### Physical features

Dimensions (WxHxD): 280x570x320mm  
 Weight: 6.4kg  
 Power supply: 100-240±10%Vac; 50-60Hz; 60VA

**Free software provided for PC control.**  
**Required PC for setup, service, method and sequence editing.**

**HTA,**  
 the  
 company

HTA is one of the leading Italian engineering and manufacturing company of scientific instruments. We are currently focused on applications and solutions for analytical, life science and clinical chemistry automation. Our specialization is in robotic systems for sample management; among our most popular products: GC and HPLC autosamplers, preparative workstations. In addition, HTA offers engineering consultancy services for its OEM customers. We operate in UNI EN ISO 9001:2008 Quality system.



Distributed by:

**HTA s.r.l.**

via del Mella, 77-79 - 25131 Brescia - ITALY

T: +39 030 3582920 - F: +39 030 3582930

**info@hta-it.com - http://www.hta-it.com**