

L-3520 Diode Array Detector

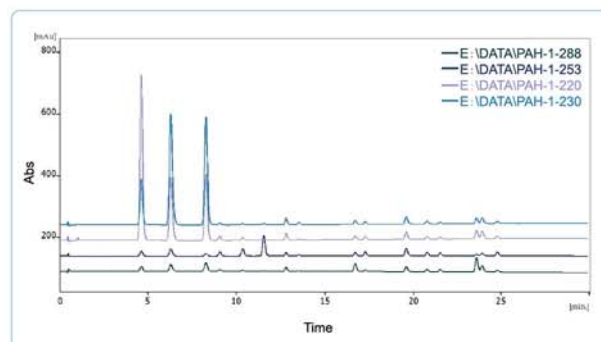
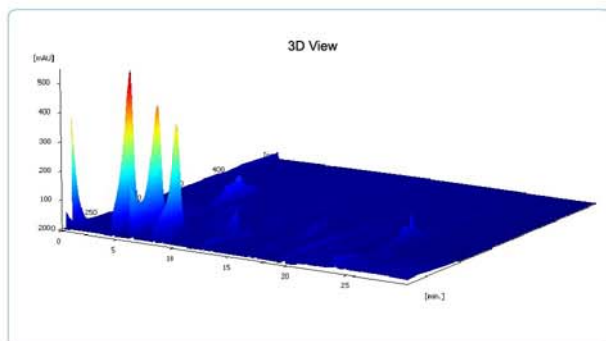
L-3520 is one diode-array detector, which is designed & developed by RIGOL's patented technology, and manufactured through advanced processing.

It provides full spectral detection for a wavelength range 190-640 nm at sampling rates up to 100 Hz, and applicable to laboratory applications from compound identification to method development.

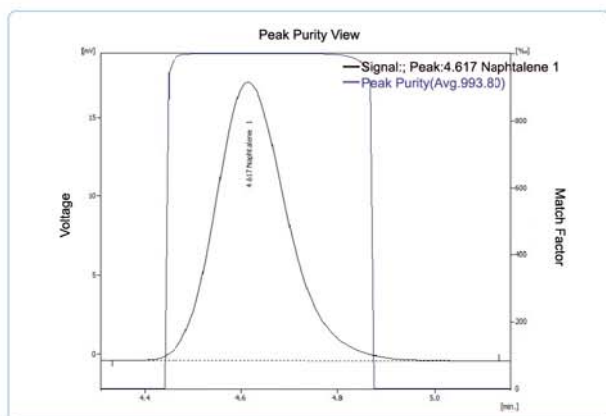


Features

- Wavelength 190-640nm, achieve spectral data while receiving chromatogram signals.

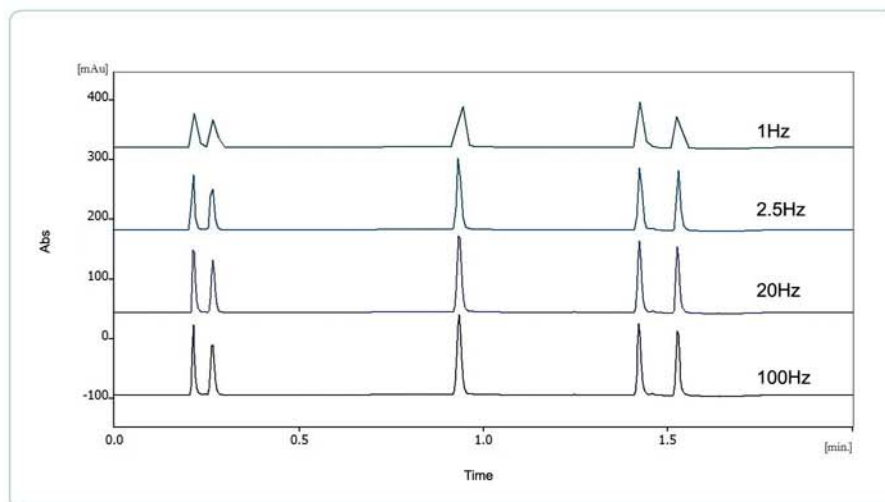


- Peak purity analysis for a fast compound-identification, with precise analysis results.



L-3520 Diode Array Detector

- Multiple wavelength and full spectral detection with high data rates (up to 100Hz) allows precise identification, quantification for compounds.



RIGOL L-3520 Diode Array Detector	
Detector type	512-element diode array
Light source	Deuterium
Maximum sampling rate	100Hz(both spectra and signals)
Short-term noise	$\pm 1 \times 10^{-5}$ AU at 254/4nm
Drift	1×10^{-3} AU/hr at 254/4nm
Linearity	>2.0AU(5%) at 254nm
Wavelength range	190~640nm
Optical resolution	1.2nm
Wavelength accuracy	± 1 nm;self-calibration with deuterium lines
Flow cell	Path length 10mm
	Cell volume 12 μ L
	Pressure limit 1200psi
Communications	LAN,USB,controller-area network(CAN),start signals
Weight	12.6Kg
Dimensions	462 mm(D) \times 367 mm(W) \times 143(H)mm
Power requirements	100 VAC - 240 VAC, 50/60 Hz, 90Wmax

The contents of this publication are provided to you "as is" without warranty of any kind, and are subject to change without notice. RIGOL does not assume any responsibility or liability for any damage, whether direct or indirect, relating to the use of this publication.